

No Technical Objection

Installation of Pallet BLE Tag 804212 on Nordisk Pallets

	Prepared by:	Checked by:	Approved by:
Name:	Øystein Topstad	Dag Steine	Per Kviler
Title:	Engineering Service manager	Project Manager	Deputy ADOA Manager
Sign:	(Signed)	(Signed)	(Signed)
Filename:	NTO-804312.docx		

List of Revisions

Rev.	Revision Description	Page(s)	Date	Prepared	Approved
A	First edition	All	2018-08-13	OT	PGK

Contents

1	Description	2
2	Tare Weight	2
3	Special Tools	2
4	Required Parts	2
5	Assembly Instruction	3

1 Description

Nordisk Aviation Product has no technical objection to fixate a Pallet BLE Tag (P/N 804212) inside the seat track on Air Cargo Pallet delivered by Nordisk Aviation Products.

This NTO explains the way of fixation BLE tag with stud bolts and nut.

Method may be used in both production of pallet and when retrofitting.

2 Tare Weight

Tare weight will not be affected

3 Special Tools

No special tools are required for this installation.

4 Required Parts

Table below shows number of parts needed for installation of one Pallet BLE tag to a Nordisk Air Cargo Pallet.

P/N	QTY	DESCRIPTION	REMARKS
115328-317	2	Stud Bolt	Included in 17000-1(B911)
113270-355	2	Nut, M8 Self Locking (8), A4, D985	Included in 17000-1(B911)
804212	1	Pallet BLE tag	-

5 Log Pallet BLE Tag number:

When Pallet BLE Tag is fixated to a pallet it is required to log the Pallet BLE Tag number together with Pallet IATA Code and Serial number. This information is to be sent to CoreInsight to be entered into the tracking system. See example:

IATA Code	Serial Number	Pallet BLE Tag number
PMC XXXXX XX	SN XXXXX	#0000116079



6 Assembly Instruction

Pallet BLE Tag may be attached to the pallet in production line or retrofitted.

The following procedure is to be followed:

1. Position is to be determined. Suggested placement is at the left side of the short extrusion as close to the end of the extrusion as possible. (~8 to 10mm from edge of the extrusion) (see figure 1) Make sure the double stud is gripping correct in seat track on both sides.

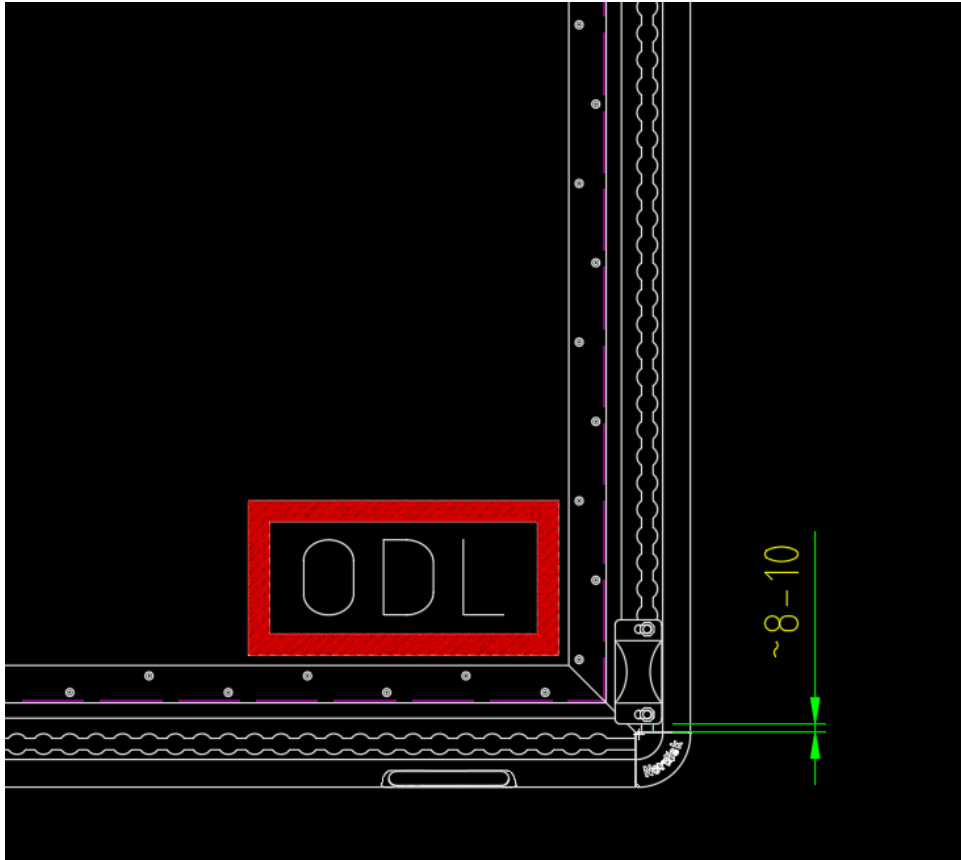


Figure 1

2. Assembly:

1. Put stud bolts inside seat track.
2. Position stud bolts and Pallet BLE tag.
3. Fixate both nuts loosely
4. Fine-tune positioning making sure both stud bolts are gripping good on the seat track.
5. Sufficiently tighten both nuts.

See figure 2 and 3 for illustration

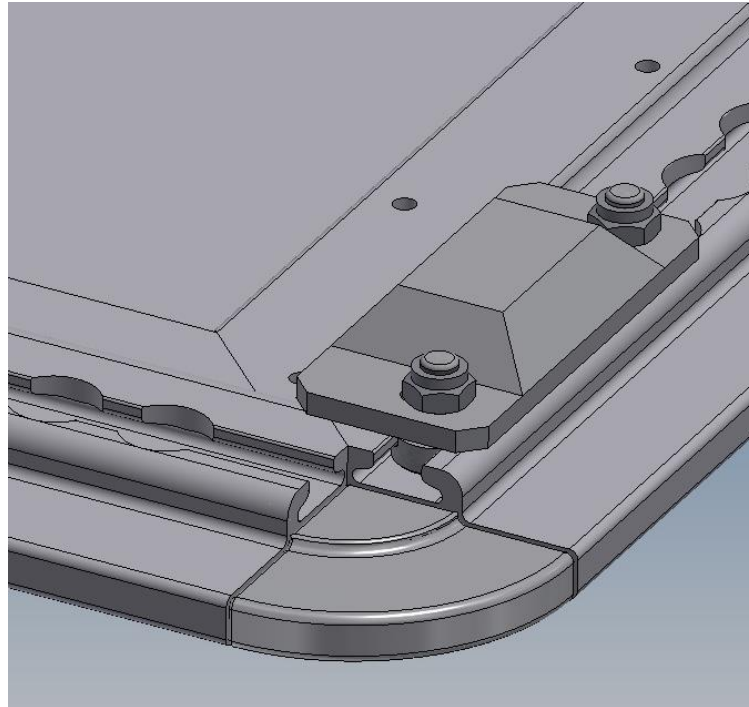


Figure 2

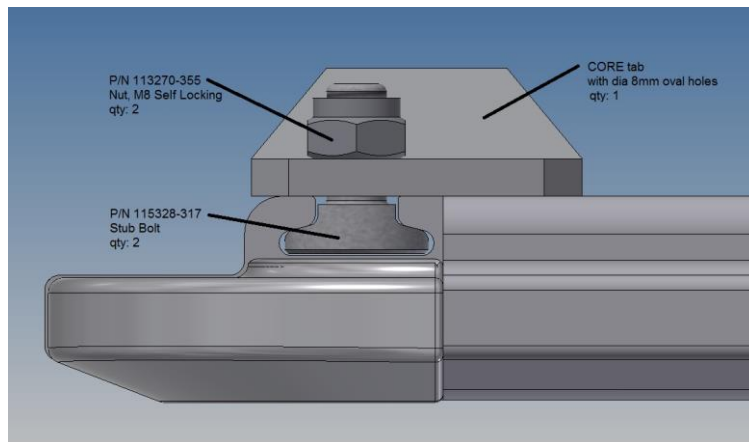


Figure 3